



GAT MONTHLY MEMBERSHIP PROGRESS REPORT

Results as of: 2/29/2024

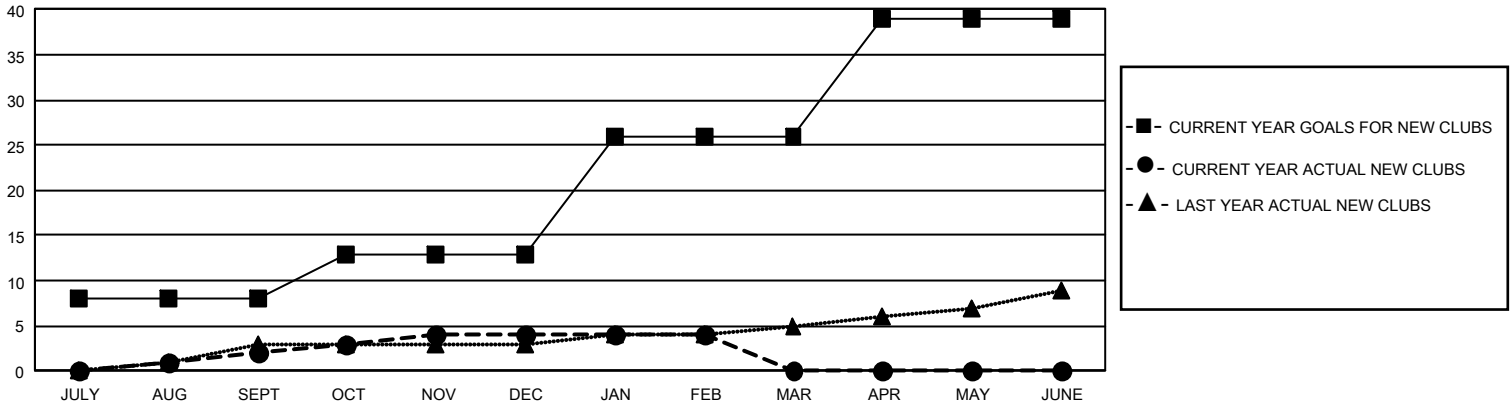
GMT Constitutional Area 1, Group B

REPORT DOES NOT INCLUDE CLUBS IN UNDISTRICTED AREAS.

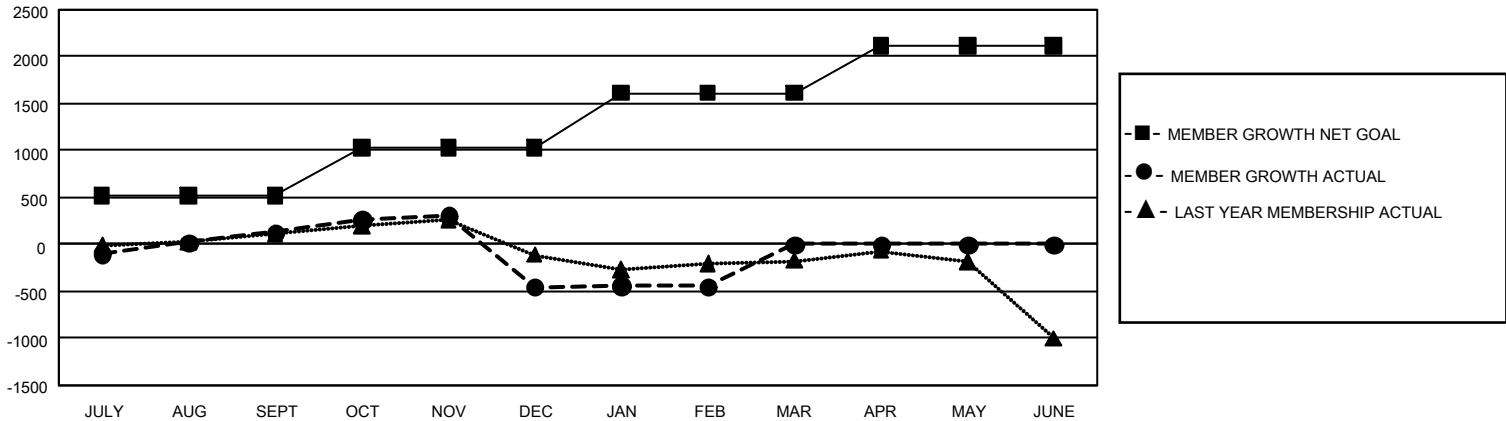
Clubs			
RESULTS FOR 2023-2024			
QUARTER	NEW CLUB GOAL	NEW CLUBS	DROPPED CLUBS
JULY/AUG/SEPT	24	2	5
OCT/NOV/DEC	15	2	26
JAN/FEB/MAR	39	0	8
APR/MAY/JUNE	39	0	0

Members			
RESULTS FOR 2023-2024			
QUARTER	MEMBER GROWTH NET GOAL	MEMBER GROWTH ACTUAL	DROPPED MEMBERS ACTUAL (including transfers)
JULY/AUG/SEPT	518	1,246	971
OCT/NOV/DEC	511	849	1,347
JAN/FEB/MAR	582	672	551
APR/MAY/JUNE	501	0	0

GOALS AND ACTUAL NEW CLUBS CUMULATIVE



GOALS AND ACTUAL MEMBERS CUMULATIVE



DROPPED CLUBS: 39	570 CLUBS OF 1,017 ADDED 1 OR MORE NEW MEMBERS	<u>GENDER DISTRIBUTION</u>	
<u>DROPPED MEMBERS</u>		MALE	15,557 (57.91%)
DECEASED	284	FEMALE	11,281 (42.00%)
CLUB CANCELLED	319	NON BINARY	3 (0.01%)
OTHER	2,268	PREFER NOT TO ANSWER	21 (0.08%)
TOTAL	2,871	TOTAL FAMILY UNIT MEMBERS	5,435
	CLICK HERE FOR CUMULATIVE MEMBERSHIP DATA	FAMILY MEMBERS PAYING HALF DUES	2,865